

SAHARA DRY

WITHOUT COMPROMISES

"THE REAL SOLUTION IS ALWAYS CLOSE TO NATURE."

Animaxx-Premium team



SAHARA DRY LITTER TREATMENT:

Uncompromising, chemical, and antibiotic free technology for clean and healthy animals.

VETERINARY MEDICINAL PRODUCT

Problems due to bedding

BODY

- External parasites
Why?
» the environment is ideal
» warm and humid
» itching
» stress

MOUTH

- Respiratory tract irritation and diseases
Why problematic?
» high in ammonia and hydrogen sulfide content
» tracheal irritation, cough
» increased stress
» deteriorating the immune system

BEDDING

- Cleanliness is incorrect
Why?
» high humidity and number of bacteria
» adheres to the skin
» infects the animal
» diseases
» deaths

EARTH

- The harvested crop might be contagious
Why?
» applied to the field manure might be highly contagious

EGG

- Infected eggs
Why?
» wet and infectious litter
Adhesion to skin
» infectious microbes penetration
» washing, vaccination needed
» high costs
» high production and health risks

LEGS

- Infectious diseases
Why?
» the skin and horn layers soften
» the skin becomes vulnerable
» minor injuries become infected and inflamed etc.

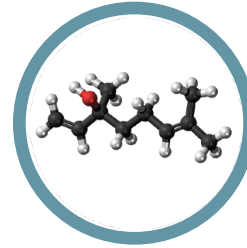
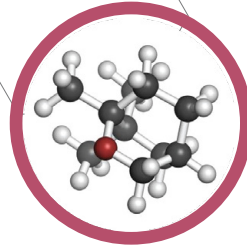
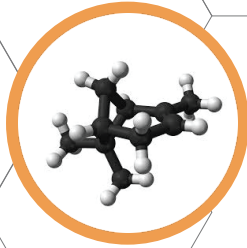
Feces

- Why problematic?**
» high moisture and organic substance content
» medium for bacterial & parasite growth
» infection
» diseases, deaths

UDDER

- Mastitis
Why?
» environmental microbes get into the milk canals
» animals infect each other
» the immune system is weakened
» other diseases; culling, etc.

How does the regular use of Sahara Dry litter treatment powder provide a solution?



Mouth:

respiratory tract irritation and diseases

- ammonia and hydrogen sulfide effective absorption
- no respiratory tract irritation
- no odour
- no stress
- strong immune system
- healthy animals

Body:

external parasites harass the herd

- eucalyptus- and yukka oil
- keeps away ecto-parasites
- no irritation
- no stress and infection
- pleasant smell and environment
- strong immune system
- healthy animals

Beading:

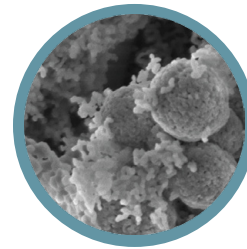
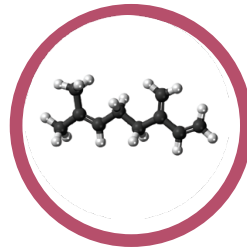
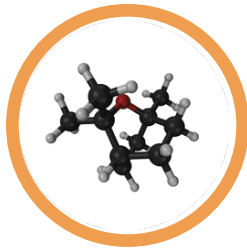
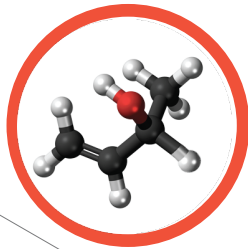
unfavourable environment

- different essential oils
- pleasant environment
- animals lie more on dry and pleasant litter and produce better
- on dry litter the probability of environmental infections decreases

Faeces:

wet, irritating, infectious

- due to the outstanding moisture absorption keeps litter dry (microorganisms do not favour it)
- inhibits decomposition of litter in the stall (drastically reduce CO2 emission)
- dry litter peels off the skin (does not stick)
- pH = 5, almost skin neutral, does not irritate the skin (this pH range is not favourable for bacterial multiplication)



Udder:

mastitis

- for the above mentioned reasons, reduces the environmental pathogenic microbe pressure causing clinical mastitis
- healthier udders produce lower somatic cell milk
- healthier udders produce more milk than inflamed udders

Hoofs:

feet and hoof diseases

- softening of the skin of the legs will not happen (no moisture, ammonia and effects of uric acid)
- no sticking the faeces on the skin
- no micro-injuries
- no infection
- healthy stock
- economic production

Egg:

infectious

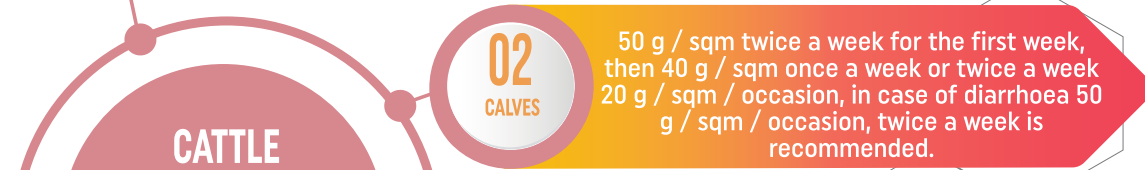
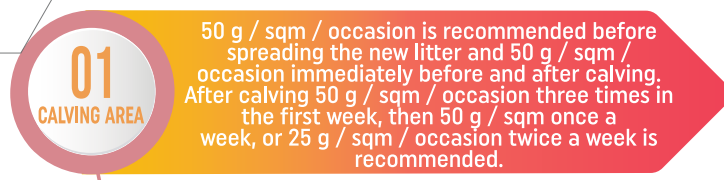
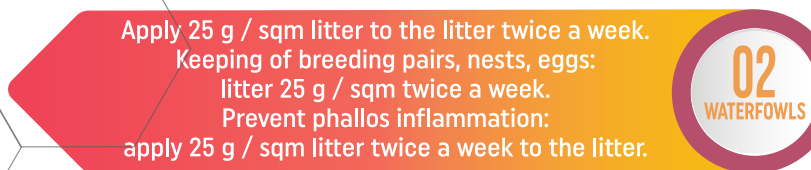
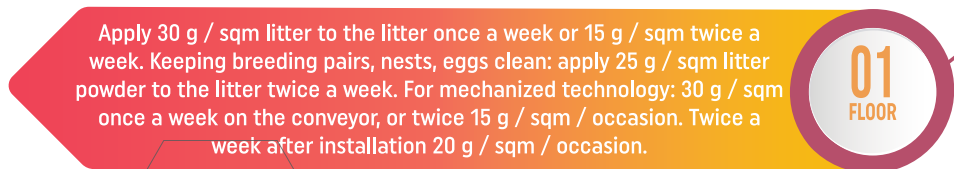
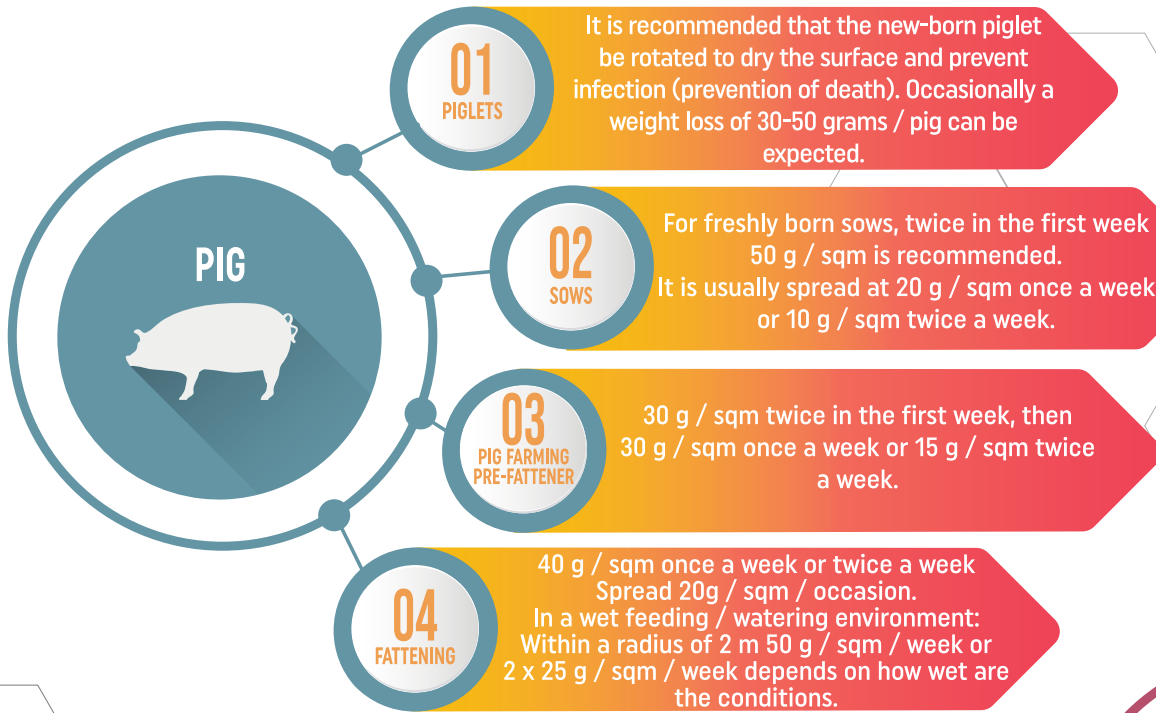
- no dirt adhesion
- no egg cleaning and disinfection needed
- no wash off the protective cuticula layer of the egg
- the egg becomes redundant
- no infection
- clean and healthy eggs
- healthy table eggs
- ensuring healthy reproduction
- more efficient and economical production

Arable land:

infectious

- Sahara Dry due to its high calcium carbonate content significantly improves soil calcium supply, improves Ca-Na ratio in saline soils, narrows the C: N ratio
- supports crumbly soil structure formation
- supports multiplication of aerobic microorganisms in the soil
- improves water management of soil significantly
- inhibits leaching
- due to higher nitrogen, carbon and kalium content of Sahara Dry treated litter and later in manure, it increases the nitrogen, carbon and kalium content of the farmland, which decrease the necessity of inorganic fertilization
- does not contain any harmful component to the environment

Experience of use - see label (application, dosage)



Developed for the most problematic conditions

SHEEP AND GOATS



01
STALL

Before placing a new bedding on the floor, 50 g / sqm once a week for fresh litter or 20 g / sqm / occasion, twice a week is recommended.

02
LAMBING

Use 50 g / twice immediately before and after lambing! A total of two times in the week after lambing 50 g / twice / occasion, then 40 g / twice once a week is recommended.

50 g / sqm on the floor in front of the litter, 40 g / sqm for fresh litter recommended once a week.

01
WHEN REPLACING
THE LITTER

Twice a week
Applying 40 g / sqm
is recommended.

02
COLT BOXING

Cleaning the toes:
spread on limbs, hooves and floor
with Sahara Dry conditioner.

03
TO PREVENT MIS
AND CONDENSATION

HORSE



OTHER SPECIES



01
DOGS,
CATS

To prevent odour spread Sahara before bedding and on bedding as needed (50 g / sqm / occasion).

02
REPTILES

5 g / nm per week
depending on litter

03
BIRDS

Even without litter
applicable daily
10 g / sqm.

04
RODENTS

Depending on the
litter, 25 g / sqm
per week.

Possible application methods

01

BEFORE NEW LITTER (BEFORE EACH NEW GROUP)

It is recommended to spread 50 g / sqm Sahara Dry litter conditioner powder on a clean and dry surface. (later litter will be easier to remove).
If you already have used litter, feel free to spread it on top with the same amount for the first time and then **follow the Guide.** (Pages 4 and 5.)

02

FEEDER AND DRINKER EQUIPMENT

Where the litter is visibly more soiled or wet, spread 50 g / sqm of Sahara Dry litter conditioner (min. daily).
Pay special attention to the corners, below windows etc. where moisture may accumulate (condensate).

03

MANUAL DOSAGE

Sahara Dry litter conditioner powder can be spread by hand or by other specially developed manual sprayers (See Animaxx-Premium home page).

04

HAY BALE OPENER AND LITTER SPREADER EQUIPMENT


The dosing of Sahara Dry litter powder into the sprayer should be 5-10% of the weight of the litter material.

05

ROOM MANAGEMENT WITH BLOWING EQUIPMENTS

(See special equipment at Animaxx-Premium home page: www.animaxx-premium.com)
(CLOSED ROOMS, STALLS AND STABLES)

- Prior to installation, treat the room with Sahara Dry Litter conditioner powder (spread) so that the application rate is 50 g / sqm.
- After this, apply the Sahara dry litter powder each week in the appropriate amount and condition.

 Switch off the ventilators before applying Sahara Dry and turn on the ventilators 20 min after spreading.

The frequency and amount of application depends on the breed of the animal, the housing technology, the material of the floor, the practice of ventilation, the humidity of the air, the temperature, the number of animals per square meter, the type and amount of litter used, etc. therefore the optimal technology must be determined individually for each site.



Recommended procedure for bacterial (infectious) foot and to prevent foot problems:

Place a clean and empty footbath tray in the traffic lane or part of the traffic lane so that the animal can enter it at least twice with the same foot. Fill the empty tray or the cut-off road with Sahara Dry litter handling powder. Then walk through the animals at a frequency that depends on the cleanliness of the feet (at least twice a week, but can also be on a daily basis in wet conditions). Sahara Dry litter treatment powder adheres to wet or damaged and purulent surfaces. It binds moisture on the surface, wipes dirt off the surface and dries the surface off (on animals). It is recommended to regularly replenish and maintain the amount of Sahara Dry litter handling powder applied in order to achieve appropriate results. In the case of lying animals, regularly spread the problematic foot with Sahara Dry litter conditioner powder for drying and keeping it dry.

Beneficial environmental effects of its use



MANURE

Sahara Dry litter treatment powder effectively binds ammonia and inhibits ammonia emissions from manure. The nitrogen content of litter treated with Sahara Dry increases compared to untreated litter due to inhibition of degradation of N containing materials and ammonia absorbance. The amount of applied litter material (straw, etc.) can be significantly reduced by applying Sahara Dry powder and C content of the manure can be reduced. The use of Sahara Dry reduces the C: N ratio (reduction of carbon, increase of nitrogen), so that the pentosan effect in the soil (during the decomposition of litter removes nitrogen from its environment and will be nutrient deficient) can be avoided. Litter treated with Sahara Dry binds urine immediately, which is effective method of the avoidance of potassium (K) depletion, so the potassium content of the litter can increase significantly compared to untreated litter, thus reducing potassium loss. Sahara Dry binds ions dissolved in water efficiently and immediately together with moisture, thus drastically reducing the loss of manure ions (it does not flow into the soil with urine), enriches manure and reduces local environmental pollution and reduces the need of synthetic fertilizer usage.



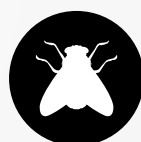
GAS EMISSIONS

Sahara Dry effectively binds water-soluble components and gases. By absorbing water, stops the microbial processes and material degradation which is the main reason and source of gas production and emission and odour environmental pollution of farms.



WORK

By using Sahara Dry regularly, the presence of odours and insects can be prevented, thus improving the work environment. Ammonia is a toxic and irritating gas that is high concentration can cause health and productivity problems (weight gain may decrease, immune system may deteriorate, stress may increase, disease rates may increase) that can be avoided. Wet litter is slippery as well. By using Sahara Dry litter conditioner, safe, dry, pleasant environment can be kept, where both workers and animals can get the most out of themselves.



OTHER

Dry litter does not support the development of fly and ectoparasite larvae. Keeping insects away, drastically reducing and eliminating them, can significantly improve the key production indicators. Dry litter does not stick (dirt drips off) so the likelihood of litter infections can be significantly reduced. Absence of diseases automatically reduce the need for antibiotic treatments, reducing the burden of antibiotics on the environment and the risk and likelihood of the occurrence of antibiotic-resistant microorganisms.



SOIL

In addition to the positive effects described for manure, Sahara Dry has a high calcium carbonate content, which improves the calcium supply to Ca-poor soils (separate liming can be avoided by reducing significant costs). It can promote the formation of a crumbly structure of soils (not only in terms of its composition but also in terms of its structure, as it does not contain mined and then ground calcium carbonate). After drying, the Sahara Dry litter is able to absorb 250-270% of the moisture again, which e.g. prevents the complete leaching of nutrients from the soil during rain and it can act as a water buffer, gradually bringing moisture to the soil microorganisms and the roots of plants, so it can strongly support soil life.

Sahara Dry technical data

packaging: multilayer paper bag with foil insert

packaging: bagged: 25 kg, palletized: 1000 kg / pallet

Big-Bag: 1000kg, 1000kg / pallet

EUR pallets: 40 bags shrink-wrapped

NÉBIH registration number:

767/1/2016 NÉBIH ÁTI (25 kg)

767/2/2016 NÉBIH ÁTI (1000 kg)

7.

Contacts:

+36 30 792 6417
+36 30 365 0327



info@animaxx-premium.com
office@animaxx-premium.com
laura@animaxx-premium.com

www.animaxx-premium.com

Animaxx-Premium Kft

www.bit.ly/animaxx

SAHARA DRY
WITHOUT COMPROMISES

WHAT IS SAHARA DRY TECHNOLOGY?

